

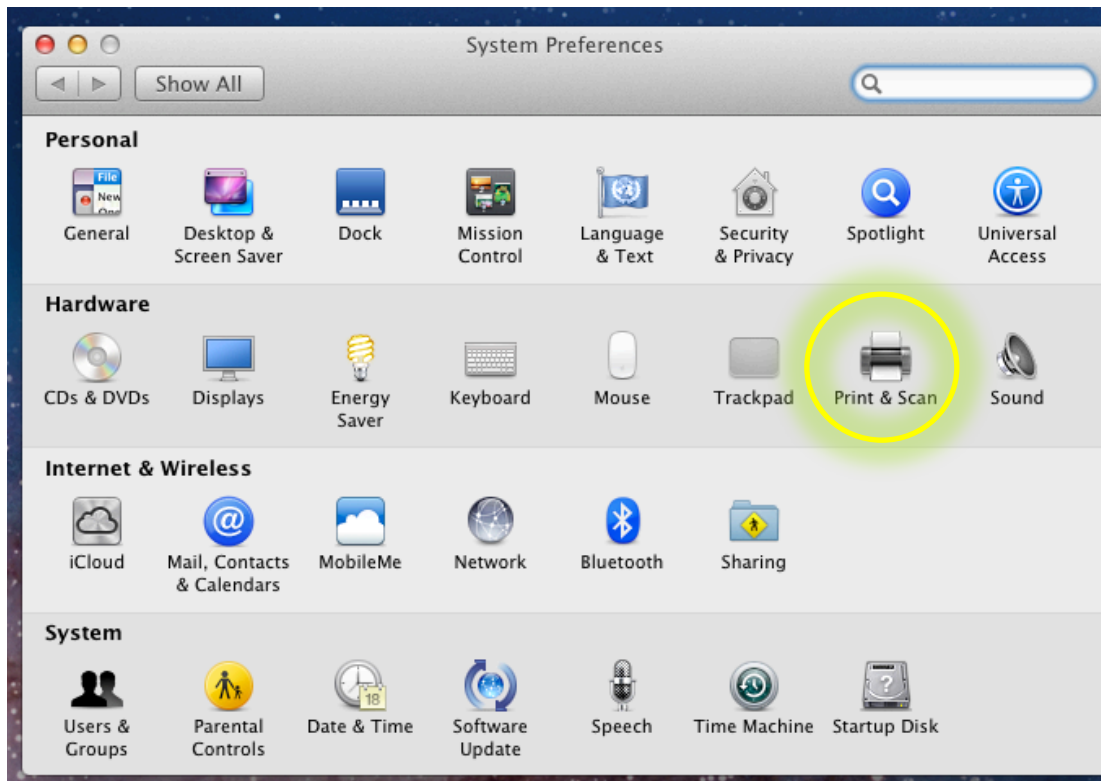
Using the DYMO LabelWriter 4XL Printer with Mac OS X

These instructions apply to our Mac customers who need help with the installation and setup of their DYMO LabelWriter 4XL Thermal Printer in order to print from ShipStation.

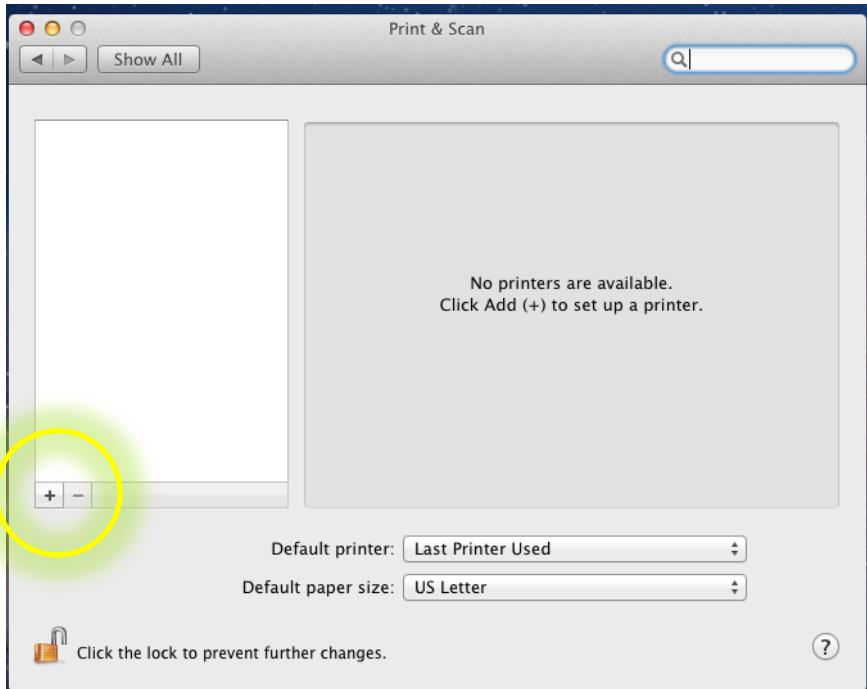
Before you begin setting up or configuring your printer to these settings, please contact us at support@shipstation.com and let us know you need to setup a Mac for 203 dpi printing so that we can turn on a feature for our Mac users that will allow these settings to print to a 203 dpi label.

We found that the built in driver for the DYMO 4XL printer seems to work best.

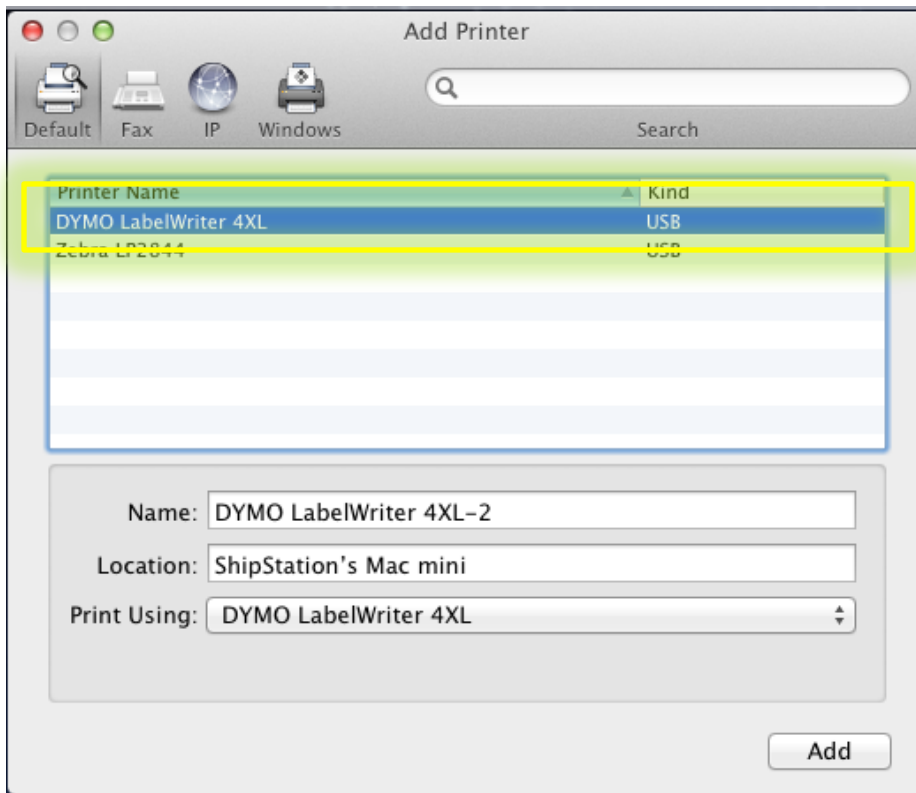
After you have connected your DYMO 4XL thermal printer to your Mac computer, please go to your System Preferences and click on your “Print & Scan” icon:



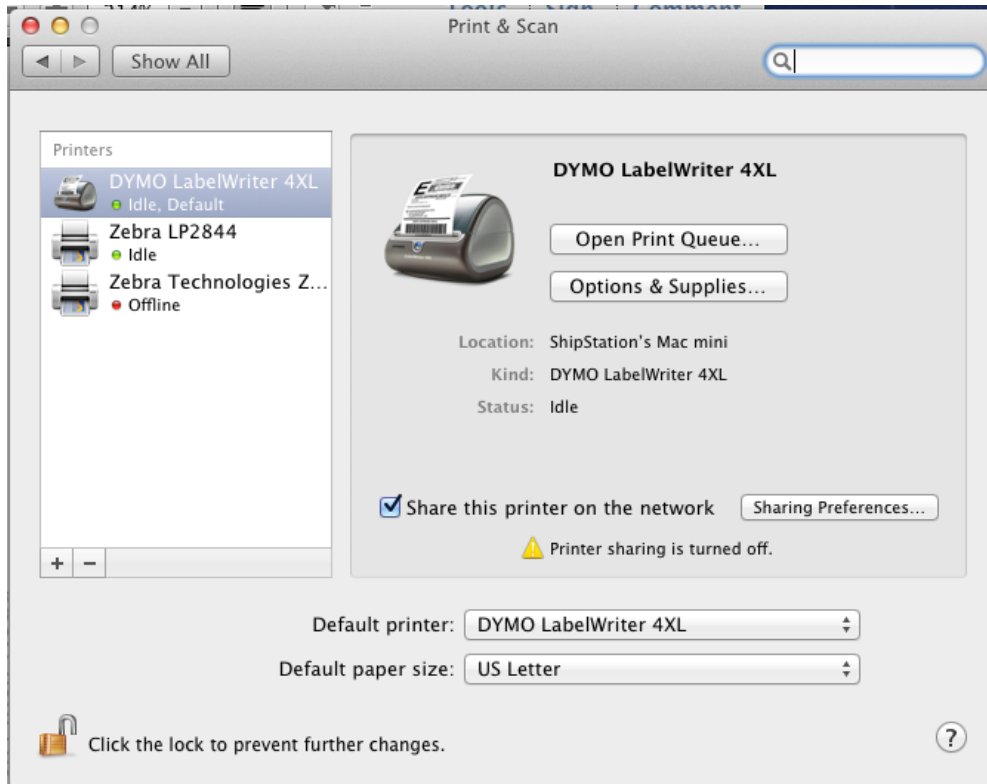
Now click on the “+” on the left to add a printer:



Choose the DYMO 4XL from the list:



The DYMO 4XL should now show on your Printers list:



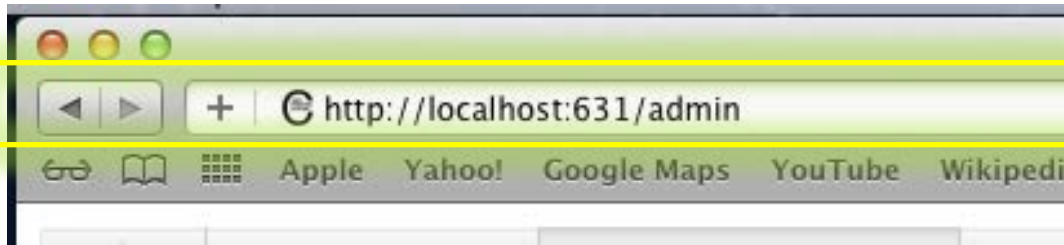
Now you will need to configure your DYMO 4XL so that it will print to a 4x6 label.

Configuring the DYMO LabelWriter 4XL Printer with Mac OS X

These instructions apply to our Mac customers that need help with the print quality and page size of the shipping labels for their DYMO LabelWriter 4XL Thermal Printer.

Open up your Safari browser and type in the following URL:

<http://localhost:631/admin>



This will open up your CUPS Administration window where you can manage your printer.

NOTE: If you receive the following error “Web Interface is Disabled” please follow the steps outlined in this red box, otherwise skip to below the red box and continue.

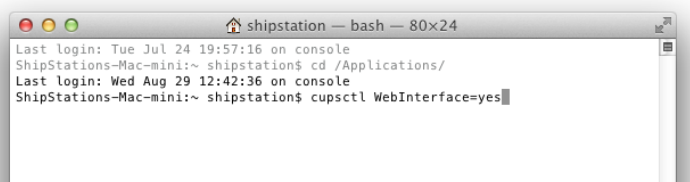
1. Open up Terminal on your system. (Navigate to /Applications/Utilities and double-click on Terminal.)
2. Type the following into your Terminal and press Enter:
`cupscctl WebInterface=yes`

You can now close out of Terminal and start over with trying to access the CUPS Administration URL.

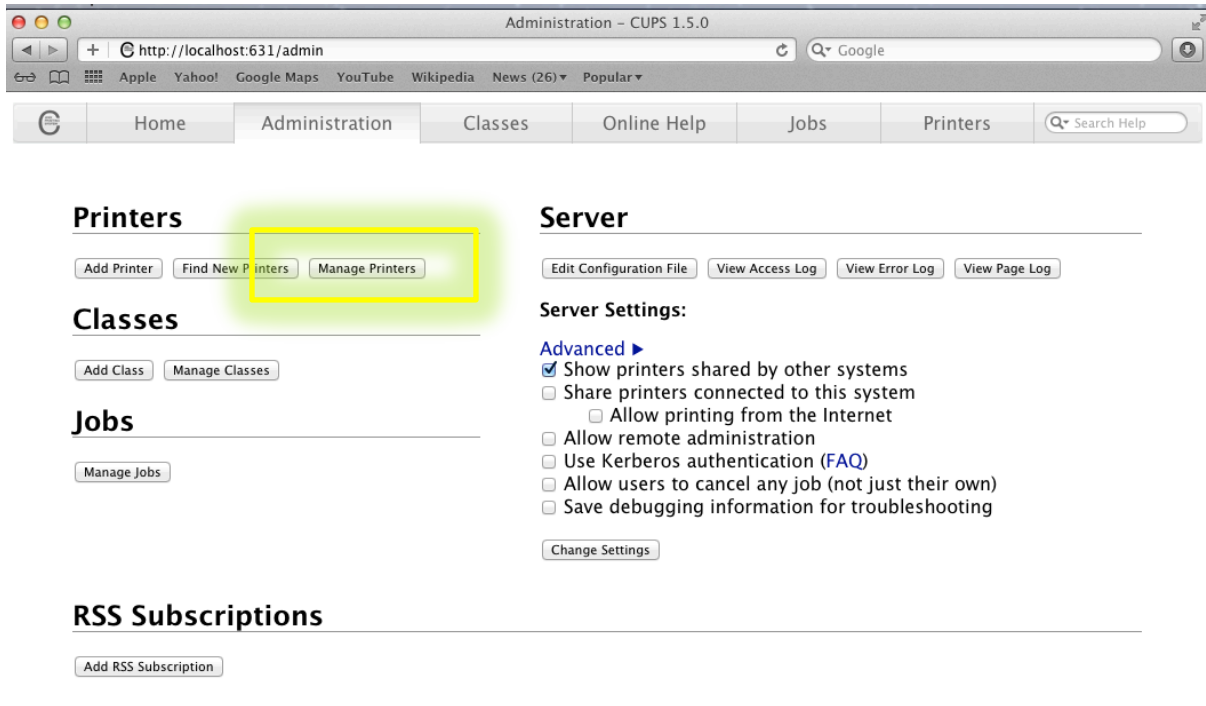


Web Interface is Disabled

The web interface is currently disabled. Run "`cupscctl WebInterface=yes`" to enable it.

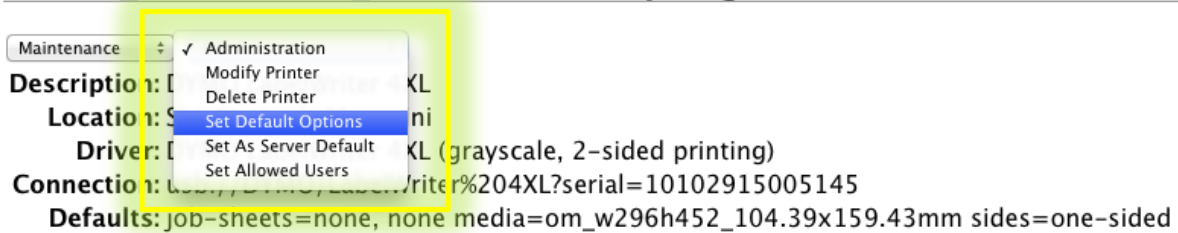


Click on the “Manage Printers” button:

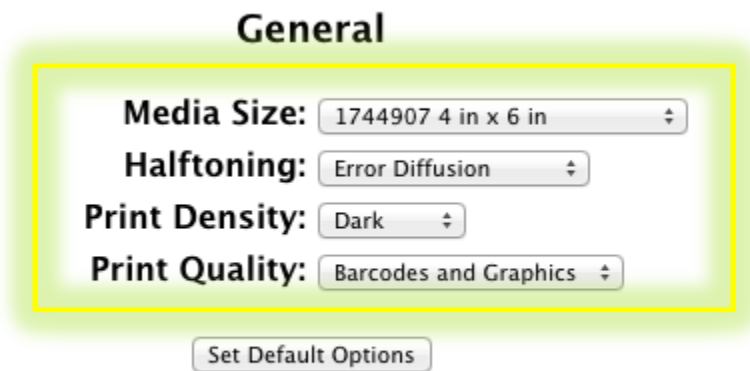


From the list of printers click on the DYMO 4XL, on this window you want to click on the drop down box that currently shows “Administration” and choose “Set Default Options”:

DYMO_LabelWriter_4XL (Idle, Accepting Jobs, Not Shared)



Now you should be in the default settings for your DYMO 4XL. On the General settings you will want to match the following settings and then click “Set Default Options”.

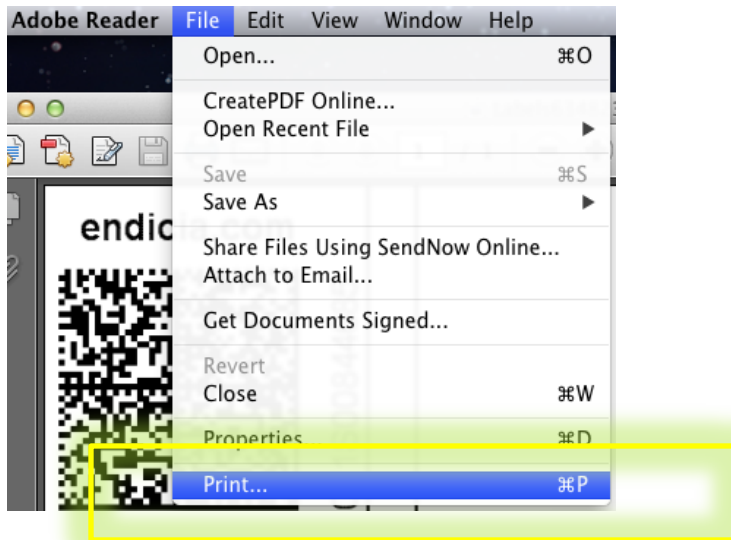


This will set your default media size for the printer to 4x6, but the Mac seems to always still have a separate default paper size in the OS. The next section of the document will help you to create a custom paper size and have it assigned to the printer.

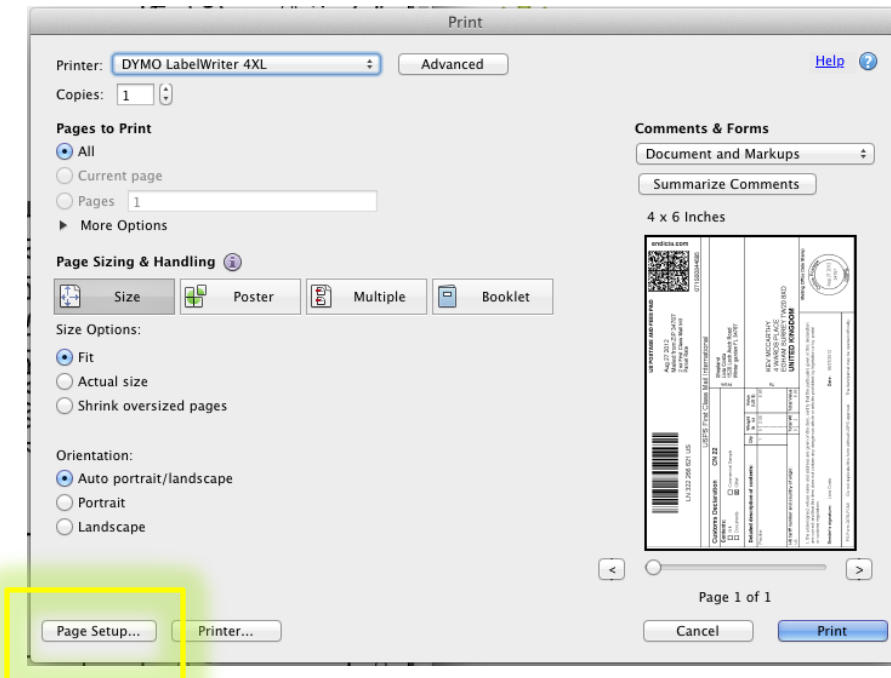
Setting Up A Default Paper Size For Your DYMO 4XL

For the next steps we use Adobe Reader for the application to help setup a custom paper size. There are other applications that should have the same ability to do this as well.

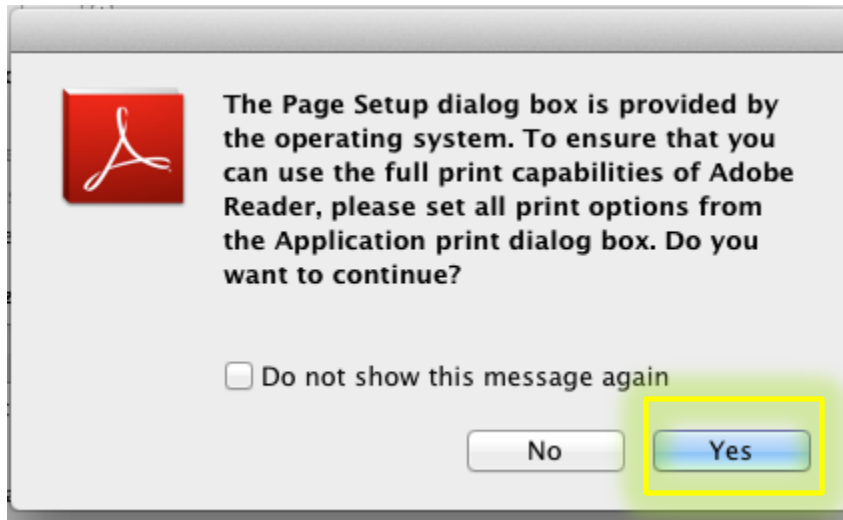
Open a PDF document in Adobe Reader and then go to the File menu and choose Print... button:



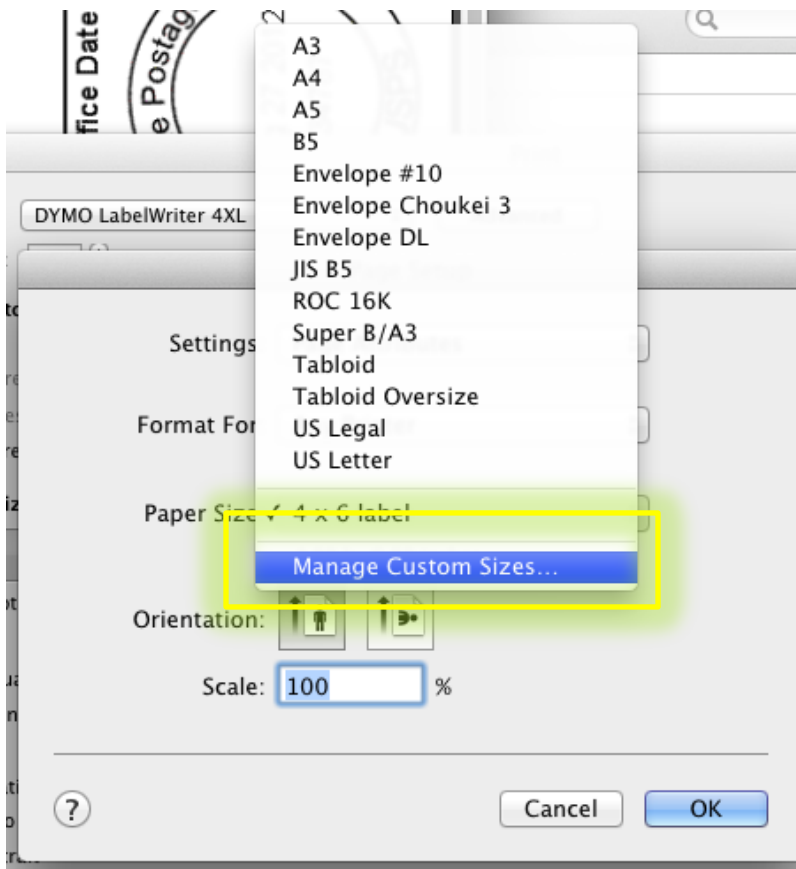
Then make sure your DYMO 4XL is the printer selected and click the Page Setup... button:



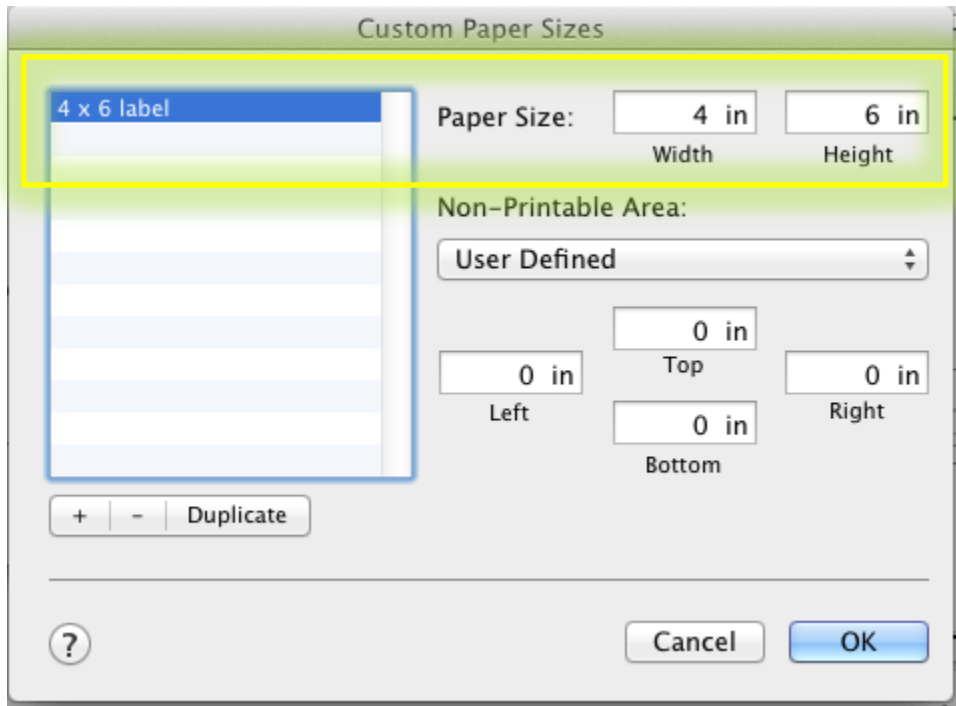
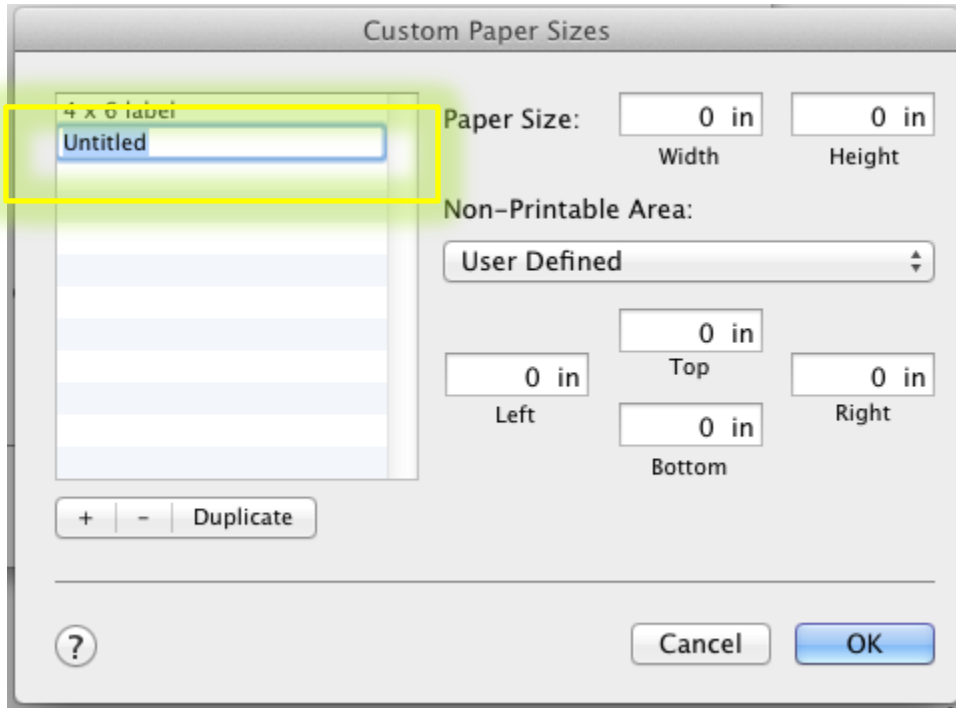
If you get a window that pops up like this one, just say Yes:



On the Page Setup window, click on the Paper Size drop down menu and choose "Manage Custom Sizes...":

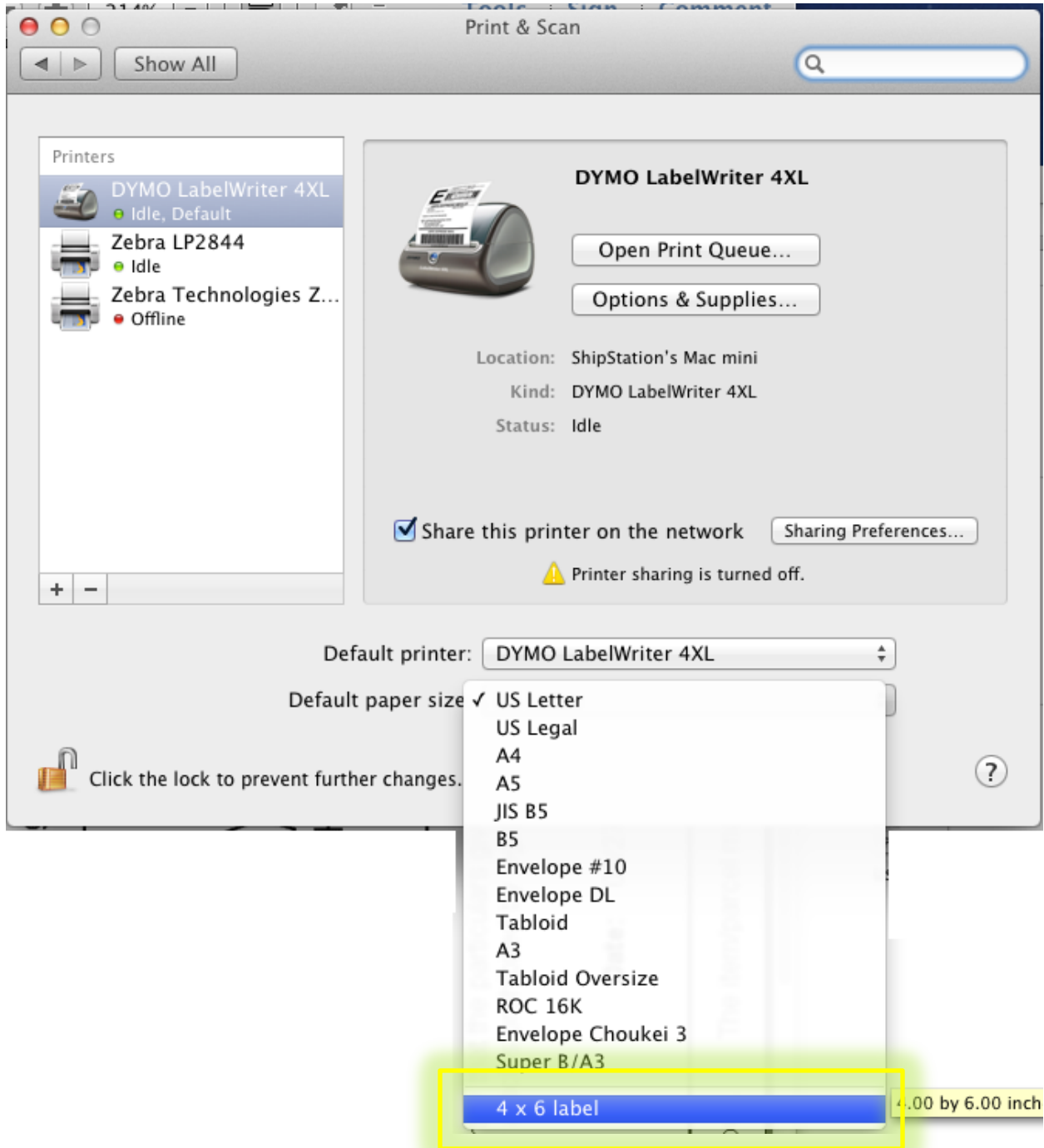


On the Custom Paper Sizes window, click the “+” button and you will get an Untitled template on the list, click and edit the name to what you prefer and then set the size of the paper to 4 in width and 6 in height:



Once you have finished with these settings click OK and then OK again. You can exit out of Adobe Reader and now go back to your Print & Scan in System Preferences.

Now when you have your DYMO 4XL select here, you can change the Default paper size from the drop down box to the new custom paper size you just created:



Now you can test printing a label and please contact us at support@shipstation.com if you have any issues.